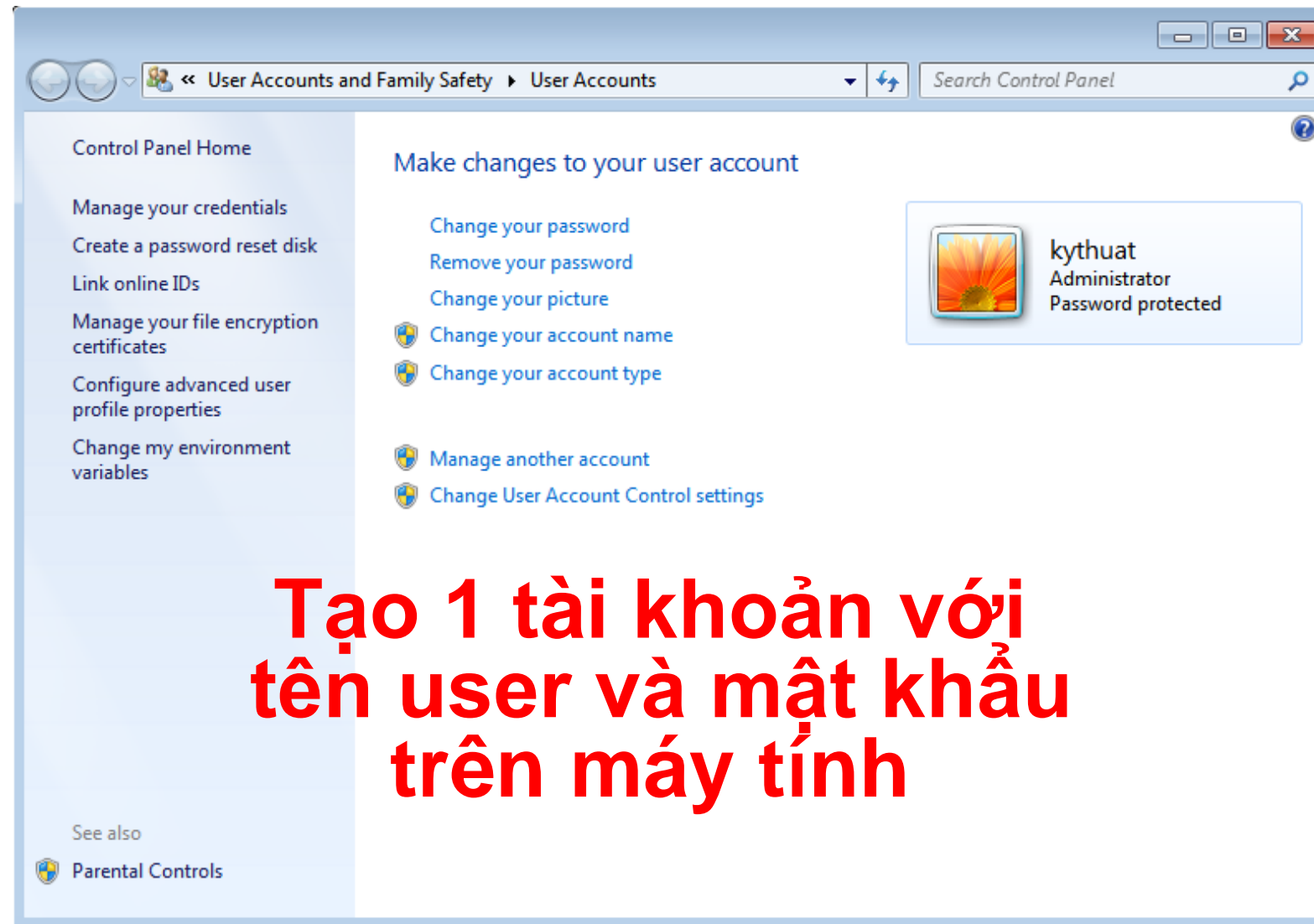


# HƯỚNG DẪN

# GHI HÌNH CAMERA IP TRÊN Ổ CỨNG MÁY TÍNH

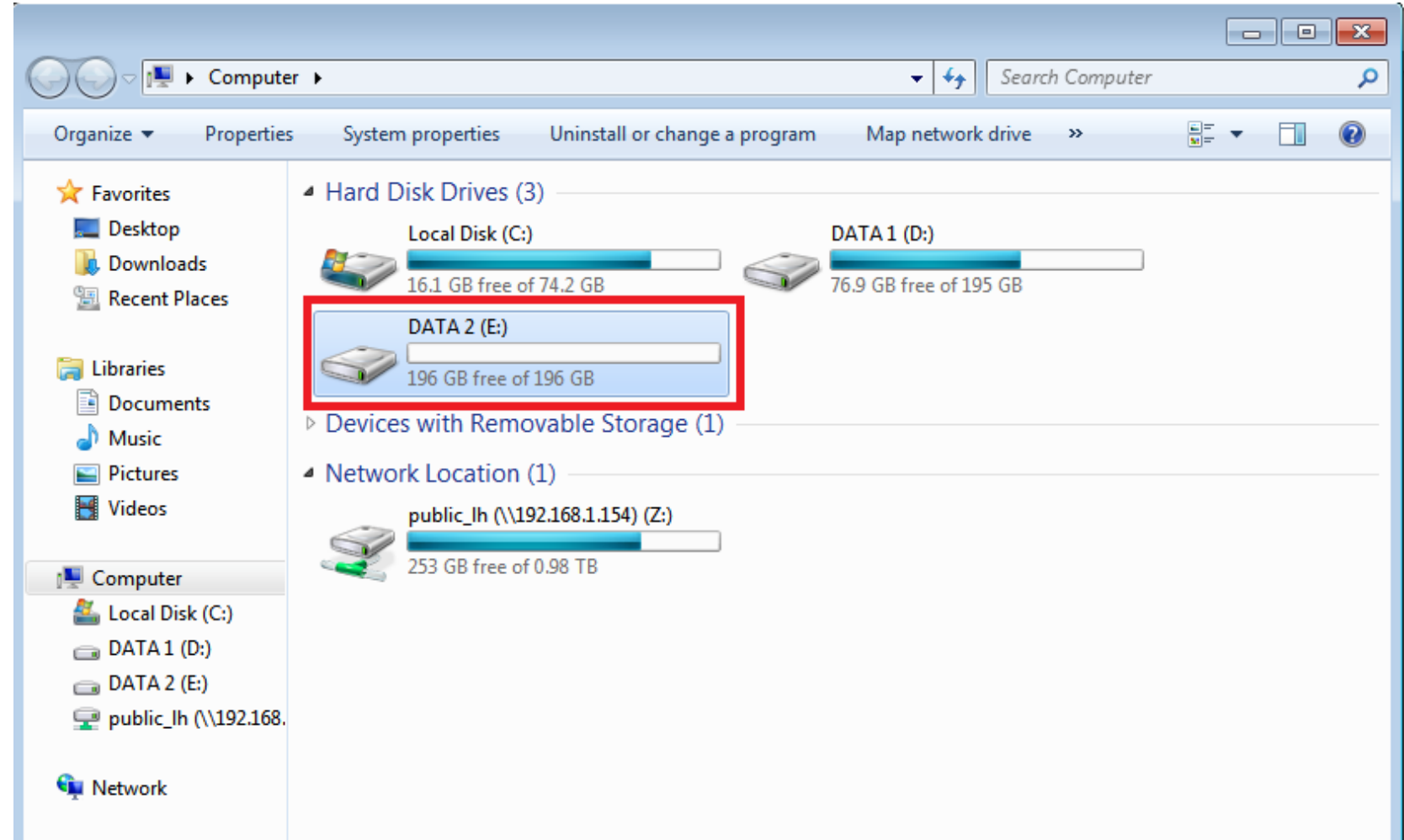
# 1. Tạo tài khoản mới trên Window



**Tạo 1 tài khoản với  
tên user và mật khẩu  
trên máy tính**

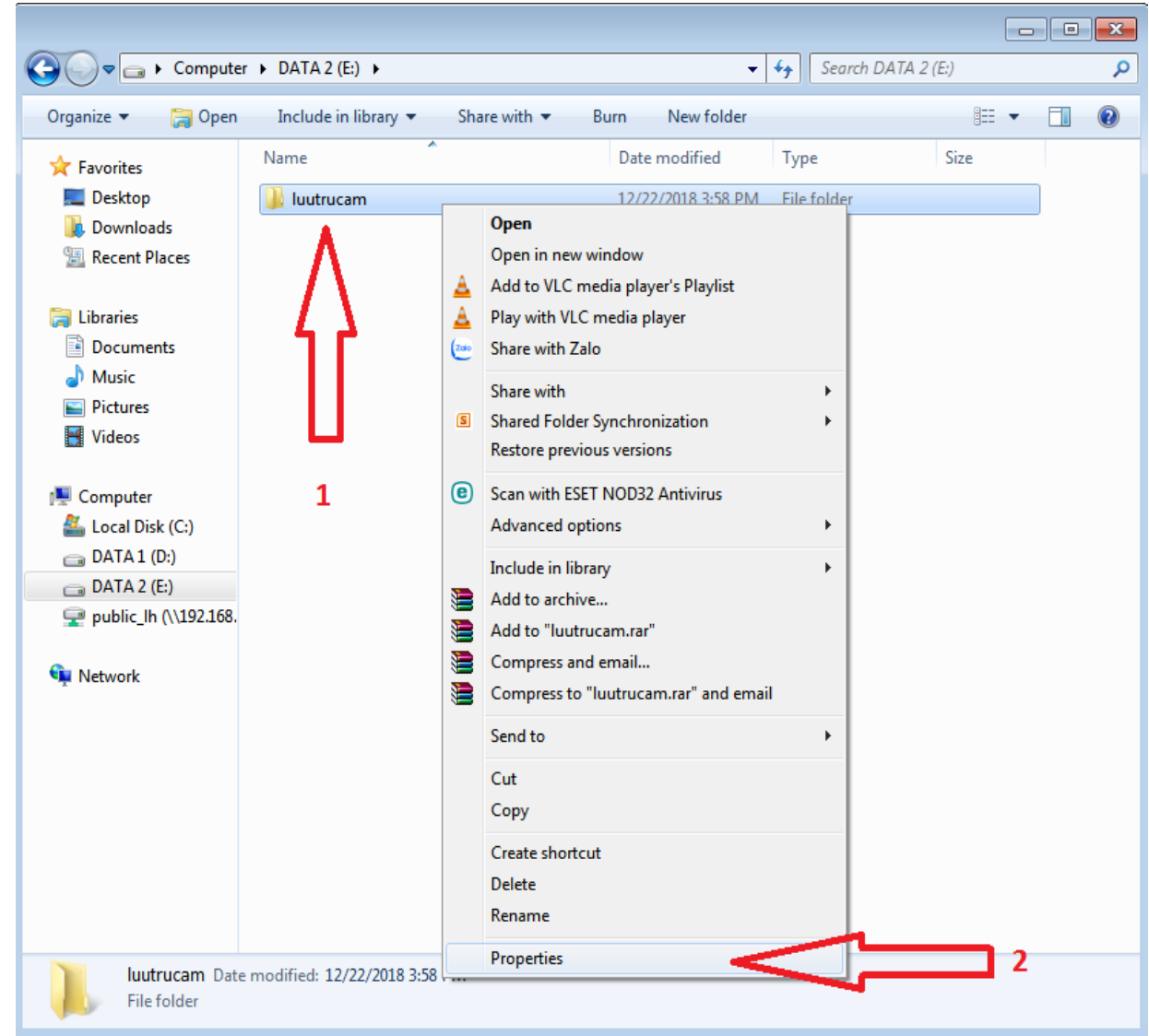
## 2. Tạo 1 ổ cứng riêng trên máy tính

**Chọn 1 ổ để  
lưu trữ**



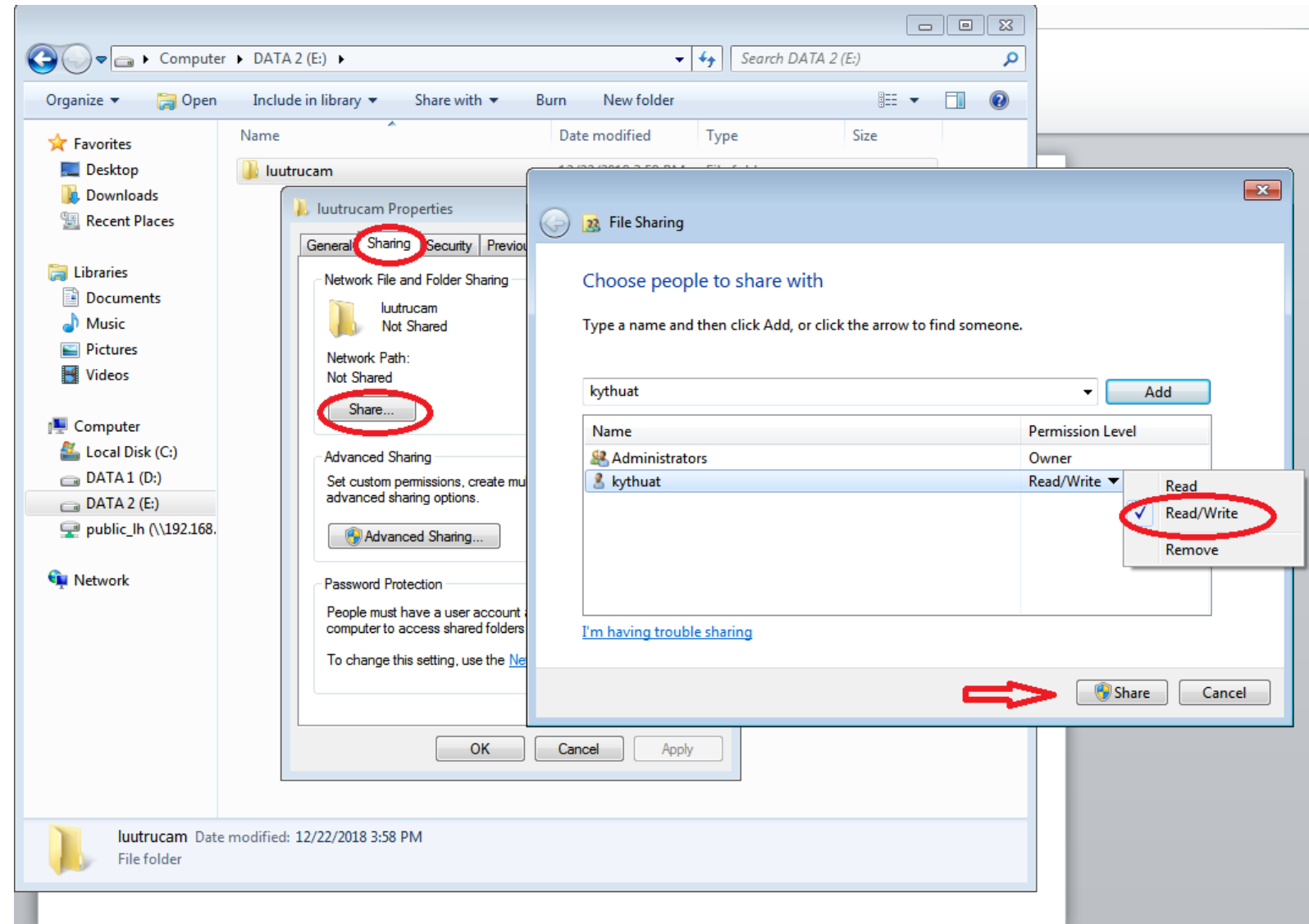
### 3. Tạo 1 thư mục trong ổ cần lưu trữ và Share cho tài khoản đã tạo

- Tạo 1 Folder ví dụ như: **luutrucam**
- Nhấp chuột phải chọn **Properties**

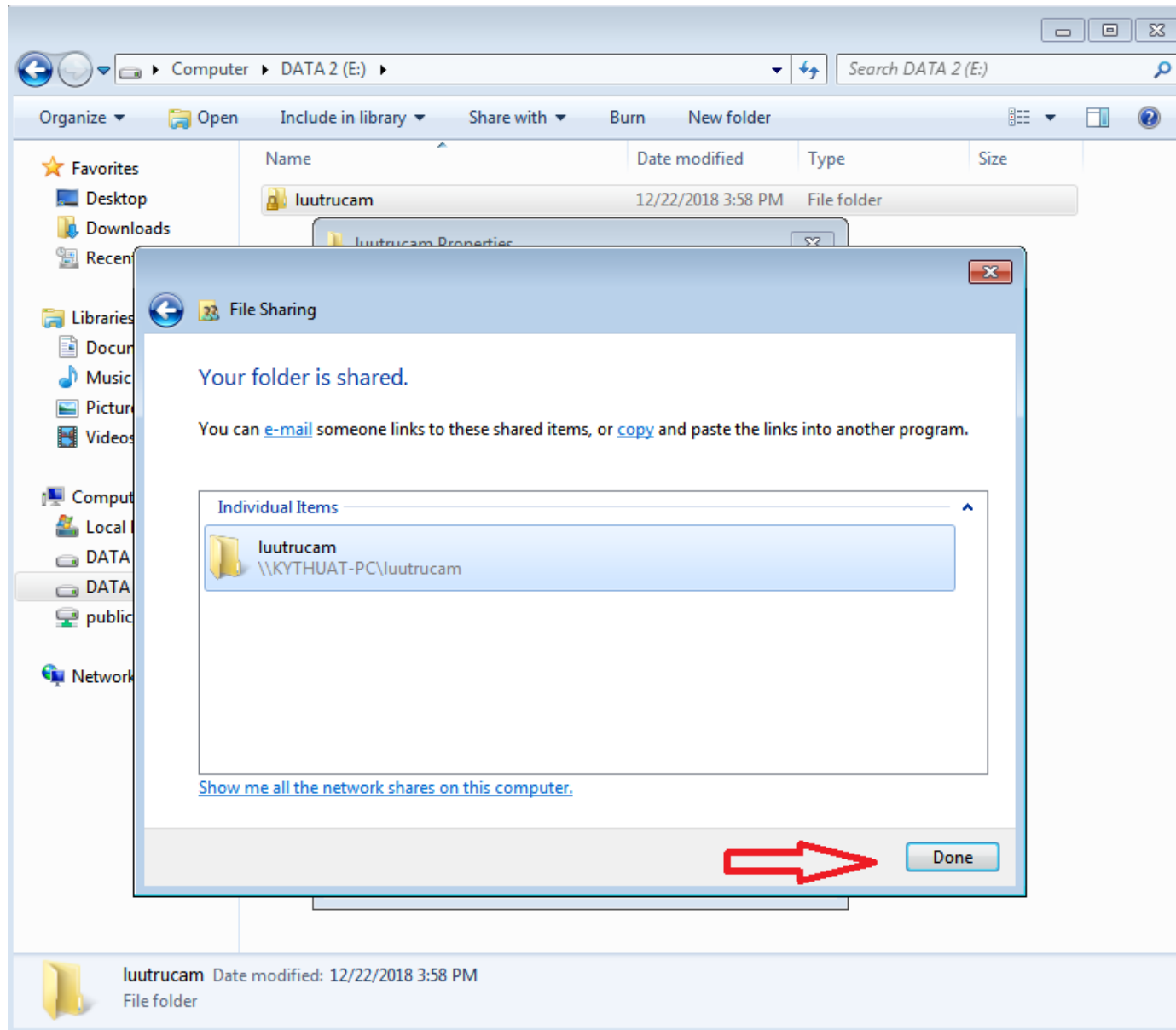


# 4. Share thư mục cho tài khoản

- > Chọn Sharing
- > Share
- > chọn user
- > chọn Share



# Chọn Done để hoàn thành chia sẻ



# 5. Cấu hình ổ cứng trên camera IP

HIKVISION Live View Playback Picture **Configuration**

HDD Management **Net HDD** Ip máy tính Folder lưu trữ

Net HDD				
HDD No.	Server Address	File Path	Type	Delete
1	192.168.1.216	Vuutrucam	NAS	×
Mounting Type <input type="text" value="SMB/CIFS"/> User Name <input type="text" value="kythuat"/> Password <input type="password" value="....."/> <input type="button" value="Test"/>				
2			NAS	×
3			NAS	×
4			NAS	×
5			NAS	×
6			NAS	×
7			NAS	×
8			NAS	×

Storage Management

save lại

**Annotations:**  
- Red circles around "Net HDD" and "Storage Management".  
- Red arrows pointing to "Ip máy tính" (Server Address) and "Folder lưu trữ" (File Path).  
- Red arrows pointing to "User máy tính" (User Name) and "pass máy tính" (Password).  
- Red arrow pointing to the "Test" button with text "cuối cùng chọn Test".

# 6. Format định dạng ổ cứng

**HIKVISION** Live View Playback Picture **Configuration**

**HDD Management** Net HDD

**HDD Management** Format

<input checked="" type="checkbox"/>	HDD No.	Capacity	Free space	Status	Type	Property	Progress
<input checked="" type="checkbox"/>	1	196.22GB	0.00GB	Uninitialized	NAS	R/W	

Quota



# Format Thành công – Camera đã nhận ổ cứng


**HIKVISION** Live View Playback Picture **Configuration**

**HDD Management** Net HDD

Local  
System  
Network  
Video/Audio  
Image  
Event  
Storage  
Schedule Settings  
**Storage Management**

**HDD Management** Format

<input type="checkbox"/>	HDD No.	Capacity	Free space	Status	Type	Property	Progress
<input type="checkbox"/>	1	196.22GB	194.00GB	Normal	NAS	R/W	

  
ok

Quota

# 7. Kiểm tra đặt lịch ghi hình của camera

HIKVISION Live View Playback Picture **Configuration**

**Record Schedule** Capture

Enable

Continuous  Delete  Delete All Advanced

Day	0	2	4	6	8	10	12	14	16	18	20	22	24
Mon	[Continuous]												
Tue	[Continuous]												
Wed	[Continuous]												
Thu	[Continuous]												
Fri	[Continuous]												
Sat	[Continuous]												
Sun	[Continuous]												

Legend: [Blue] Continuous, [Green] Motion, [Orange] Motion | Alarm, [Purple] Event

# 8. Camera đã ghi hình

## Xem lại Trực Tiếp Trên Cam

The screenshot displays the HIKVISION camera playback interface. At the top, there are navigation tabs: "Live View", "Playback" (highlighted in red), "Picture", and "Configuration". On the right side of the top bar, there are user controls: "admin", "Help", and "Logout". Below the top bar, the interface shows "Channel No.: 1" and "Status: 1Speed".

The main video feed shows a street scene with several motorcycles parked on a sidewalk. A person in a blue jacket is visible near the motorcycles. The timestamp "12-22-2018 Sat 16:32:38" is overlaid on the top left of the video. The text "IP Camera21" is visible in the bottom right corner of the video frame.

On the right side of the interface, there is a calendar for December 2018. The date "22" is highlighted in red. Below the calendar is a red "Search" button.

At the bottom of the interface, there is a playback control bar. It includes a "Set playback time" section with a time input field showing "00 : 00 : 00". Below this is a timeline with a playhead at "2018-12-22 16:32:37". A red arrow points to the playhead, with the text "Dữ liệu" (Data) written above it. The timeline shows hourly intervals from 11:00 to 22:00.

**Chúc các bạn  
thành công**

*Thank you!*